

SHOW YOUR STUDENTS WHY YOUR CLASS MATTERS

SIGN MFG DAY

FRIDAY, OCTOBER 3

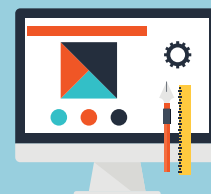
WHAT IS SIGN MANUFACTURING DAY?



As an educator, you see your students' excitement as they experience how they can put the skills you teach them into action.



Students get an opportunity to ask potential employers questions about the profession (welding, design, etc.) and the sign, graphics, and visual communications industry.



Local businesses in the sign, graphics, and visual communications industry will open their doors to your students for business tours to show them first-hand how their skills lead to a diverse and in-demand career path.

TOP THREE REASONS TO PARTICIPATE IN SIGN MANUFACTURING DAY:

1

JOIN THE MOMENTUM:

BEFORE THE BUSINESS TOUR:
23% of students considered an industry career

23%

86%

AFTER THE BUSINESS TOUR:
86% considered a sign industry career

Register your school now!

2

GET STUDENTS HIRED:

In previous years, participating companies have used the day to hire entry-level workers, develop co-op and internship programs and make valuable connections with local high school, technical school, and community college educators.



3

CATCH THEIR ATTENTION:

Share this video with your students to connect the dots between their skills and talents with a career in the sign, graphics, and visual communications industry.



SIGN UP!

Get in touch with workforce@signs.org to register your school for 2025!

IN PARTNERSHIP WITH
THE NATIONAL ASSOCIATION
OF MANUFACTURERS

www.signs.org/mfgday
www.mfgday.com

LINK THE CLASSROOM TO THE REAL WORLD

Show your students the connection between in-classroom learning and the real-world careers available in the sign and graphics industry by connecting your students with local employers.



THESE ARE ONLY SOME OF THE SKILLS NEEDED
IN THE FABRICATION AND INSTALLATION OF SIGNS!

WELDING	ELECTRICAL
GRAPHIC DESIGN	PRECISION MACHINING
FABRICATION	CAD/TECHNICAL DRAFTING

SIGN
UP
NOW!

Go [here](#) to learn more!
Questions? Contact us at workforce@signs.org.